

Founders Award for Neurotrauma Research

TIRR Foundation Names Mission Connect's Original Funding Award

More than 25 years ago, Mission Connect was created to generate innovative ideas, principles, and theories in spinal cord injury (SCI) research and, soon thereafter, traumatic brain injury (TBI) research too. The founders knew that to develop treatments to preserve and restore neurological function following injury, basic research was an essential starting point. Mission Connect set forth to build the bedrock of fundamental knowledge needed to advance neurotrauma science and medicine.

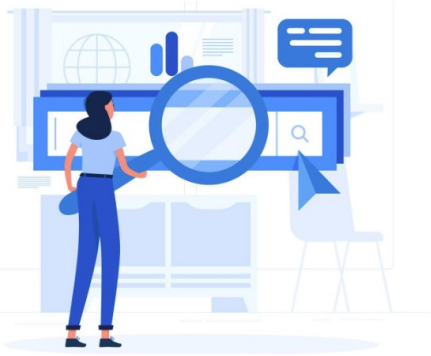
Each year since 1998, Mission Connect has issued a call for proposals seeking the most robust, original, and well-designed research projects. The strong theoretical foundation on which many translational and clinical studies have launched is the knowledge gained through Mission Connect's early basic re-

search. Today, all levels of research are now represented within Mission Connect.

In early 2023, TIRR Foundation named Mission Connect's earliest and longest-existing award, the *Founders Award for Neurotrauma Research* (Founders Award). The naming of this award is in recognition of the families and small group of philanthropists, physicians, and scientists who started Mission Connect.

In 2021, Mission Connect introduced the research award *Robert Allan Shivers, Jr. Integrating Perspectives in Neurotrauma Research* (IP Award). Through the Founders Award and the IP Award, Mission Connect facilitates SCI and TBI research at every level (basic, translational, and clinical) and in a broad range of areas.

Basic, Translational, and Clinical; Understanding the Three Levels of Research



Basic research generates new ideas, principles, and theories, which may not be immediately utilized but nonetheless form the basis of progress and development in different fields. Today's computers, for example, could not exist without research in pure mathematics conducted over a century ago, for which there was no known practical application at the time. Basic research rarely helps practitioners directly with their everyday concerns; nevertheless, it stimulates new ways of thinking that have the potential to revolutionize and dramatically improve how practitioners deal with a problem in the future. *(Taken from Wikipedia)*

Translational Research seeks to produce more meaningful, applicable results that directly benefit human health. The goal of translational research is to translate (move) basic science discoveries more quickly and efficiently into practice.

Clinical Research is the comprehensive study of the safety and effectiveness of the most promising advances in patient care. Clinical research is different from laboratory research. It involves people who volunteer to help us better understand medicine and health. Every drug, device, tool, diagnostic test, technique, and technology used in medicine today was once tested in volunteers who took part in clinical research studies.